

A high-speed photograph of water splashing upwards, creating a central column of water with many smaller droplets and bubbles around it. The water is clear and the background is white.

VISIONS™
Waterproof Flooring

**INSTALLATION
AND MAINTENANCE MANUALS**

Luxury SPC w / Vinyl

INSTALLATION AND MAINTENANCE GUIDELINES

Before starting installation, it is important to read and understand all instruction and warranty information. By starting installation of this product, you are agreeing that you have read and understand all installer / owner's requirements and responsibilities, and are aware that deviating from the instructions and recommendations in this installation guide may result in voiding the product warranty.

VISION™ Waterproof Floor with IXPE pad attached, is a floating floor and should NOT be secured to the floor. Do not install fixed objects, such as cabinets on top of the flooring. Floor must be installed with proper gaps for expansion around fixed vertical objects, such as permanent fixtures, post, fire place, door jambs, etc. Trims/moldings/transition floor accessories must be installed in ways to allow floor movement.

It is sole responsibility of the installer/owner, prior to installation, to assure that the planned installation area is suitable for the flooring and meets local building codes, as well as the recommendations listed herein. The manufacturer accepts no responsibility for product failure extending from or related to failure to meet job site environment and subflooring requirements.

The installer/owner assumes full responsibility for the final inspection of this product. Inspection should be done prior to installation and should include print/color/texture, factory finish and locking system. If the product is not acceptable, DO NOT INSTALL IT. Contact your supplier immediately for assistance. Flooring that has been installed will be deemed to have been inspected and quality accepted. VISION™ will not accept any responsibility for any flooring installed with visible defects. Installation constitutes acceptance of flooring material, subfloor/substrate, the jobsite itself including the ambient temperature and relative humidity at the time of installation, and all impacting variables that may affect the floor.

VISION™ Waterproof Floor is rated for indoor use only. The installed area must remain climate controlled (65°F – 85°F) for the life of the floor. Do not install outdoors. In addition to fulfilling all requirements for indoor installation, installing this waterproof floor in a sunroom must meet additional strict guidelines to prevent undesired effects due to sun exposure, such as prolonged direct sunlight can cause the floor to expand excessively, or can cause floor color to fade or discolor. This waterproof floor is not recommended for sunroom with unrestricted usage. Glass windows must be treated with quality UV shield or covered with blinds or drapes to minimize direct sunlight exposure.

VISION™ Floor is waterproof, but is not a moisture barrier. Moisture problems must be dealt separately and resolved before floor installation.

JOB SITE ASSESSMENTS

Exterior

Damage caused by water and high humidity should be addressed prior to installing VISIONS™ Waterproof Floor.

- Examine the topography and landscaping surrounding the building. Water must flow away from the foundation

of the building.

- Structure leak must be corrected to make sure rainwater does not sip through.
- Proper ventilation in crawl spaces will prevent buildup of high moisture on the subfloor. Crawl spaces must have at least 18" clearance from the ground. High moisture from underneath and the surrounding can compromise the intended life of building materials and may encourage the growth of mold.

Interior

Moisture issues should be addressed and corrected at the job site prior to installation.

- Examine the installation site for leaky plumbing, including leaks from water heaters, dishwashers, washing machines, or any other water-bearing fixtures or pipes.
- Subfloors must be sturdy, sound, and flat within 1/8" in a 8-foot radius, and 3/16 of an inch within a 12-foot radius. The substrate should not slope more than 1 inch per 8 feet in any direction. In addition to flatness requirements as mentioned, there is zero tolerance for abrupt height variations. All abrupt height variations must be addressed by grinding or sanding.
- All concrete substrates must be tested for relative humidity, moisture and pH before installing VISIONS™ Waterproof Floor. Test results should not exceed 85% relative humidity (RH). The Calcium Chloride Test for moisture should be no more than 8lbs per one-thousand square feet in 24 hours MVER, (Moisture Vapor Emission Rating) and pH tests for alkalinity levels should register between 7 and 9.
- Old wood floors must be checked for moisture. Obvious signs of moisture issues include warping, peaking, degradation of the integrity of the substrate, rusted fasteners, and rusted floor registers. Even if obvious signs are not present, the material should be tested using a wood moisture meter; moisture levels should not exceed 12%.

ATTENTION:

Mold and mildew grow only in the presence of moisture. Moisture issues at the job site should be addressed and corrected prior to installation.

Various Federal, State, and local government agencies have established regulations governing removal of old building products which may contain asbestos, crystalline silica, etc., which are harmful to human body. Do not sand, dry sweep, dry scrape, drill, mechanically break existing resilient floor, backing, adhesive.

CONDITIONS OF SUBFLOOR

Subfloor must be sturdy and not loosed, not exposed to exterior elements, surface must be flat but a little coarse for gripping, flat within 1/8" within 6' radius or 3/16" within 12' radius, not damp, free of debris to prevent abrupt height variation. The subfloor must be level and maximum tolerance for slope is not over 1" per 8 feet span in any direction.

Concrete

VISIONS™ is waterproof, but moisture issues should be corrected at the jobsite before installation begins to prevent serious damage to the subfloor and surrounding structure, and to discourage the growth of mold and mildew. Concrete substrates should be prepared in accordance to the most current version of ASTM F710 (Standard Practice for Preparing Concrete Floors to Receive Resilient Flooring). Moisture and alkalinity tests should be performed on all concrete substrates regardless of grade level or age of slab. Perform either ASTM F2170 In-Situ Relative Humidity (RH) test or ASTM F1869 Calcium Chloride Moisture Test (MVER: Moisture Vapor Emission Rating). Perform pH test per ASTM F710 to determine alkalinity of the slab. RH Test results should not exceed 85% relative humidity. The Calcium Chloride Test for moisture should measure no more than 8lbs per one-thousand square feet in 24 hours MVER, and pH tests for alkalinity levels should register between 7 and 9.

Electronic meter testing is not considered a replacement for a Calcium Chloride Test or Relative Humidity Test. All moisture tests should be conducted prior to installation to ensure that moisture is at recommended levels. Follow current ASTM F710 guidelines. **The test results should be documented and kept by the homeowner.**

Radiant Heat

Radiant heating systems must be cast 1-1/2 inch below the surface of the concrete slab, and should be operating at least 2 weeks before installing VISIONS™ Waterproof Floor. Set the temperature of the radiant heating system to 68°F 48 hours before, during, and 72 hours after installation. The temperature of the radiant heat floor may be increased gradually 72 hours after installation, but the surface temperature should never exceed 85°F. Contact the manufacturer of your radiant heating system for further recommendations.

Composite or Multilayer Wooden Subfloor

Wood substrates must be A.P.A. approved with a minimum grade of “BB” or “CC”. VISIONS™ Waterproof Floor manufacturing guidelines recommend performing moisture tests prior to installation to prevent serious damage to the subfloor and surrounding structure, and to discourage the growth of mold and mildew. Moisture readings should never exceed 14% for plywood, OSB, particleboard and chipboard substrates. If moisture readings exceed 14%, it is advisable to correct moisture issues at the jobsite before installing VISIONS™ Waterproof Floors.

Existing Hard Surface Floors

Existing floors must be firmly attached to the structural floor. They must be sturdy, sound, and flat within 1/8 of an inch within a 8-foot radius, and 3/16 of an inch within a 12-foot radius. The substrate should not slope more than 1 inch per 8 feet in any direction. When installing VISIONS™ Waterproof Floor in commercial or residential settings, grout lines of ceramic, stone, or other hard surface floor tiles or slabs, must be filled with self-leveling cement and patching compound.

Unapproved Subfloors

VISION™ Waterproof Floor is manufactured with 1.5 mm high density IXPE pad attached, and interlocking tongue and groove system for floating installation. For the integrity of the interlocking system, VISIONS™ Waterproof Floor must be installed over solid flat and sturdy platform. VISIONS™ floors cannot be installed over existing floating floor, carpet, compressible insulation underlayment, hardwood floor on concrete, or cushion material. All the examples mentioned may have movement under different circumstances, for example expansion and contraction of wood floor, or underlayment compressed under load. These movements may cause failure to the interlocking joints of VISION™ floor.

PREPARATION & INSTALLATION PROCEDURES

1. The best installation practice is to acclimate Visions™ Floor at approximately 68°F room temperature, 48 hours prior to and during installation. The room temperature range for installation should be between 65 and 85°F.
2. During installation, open at least 4 cartons at a time to spread out the print patterns to avoid placing identical prints adjacent or next to one another. For better blend and even distribution of repeat patterns, identical prints in every other row need to be staggered. Avoid laying brick pattern by also staggering the layout of every other rows.
3. Carefully check planks for any defects before installation. Any plank that has been installed will be deemed acceptable by the installer. Check that all ITEM or SKU NUMBERS are the same and sufficient amount of floor material has been purchased to complete the job. Remove any traces of glue or residue from the previous flooring.

4. For large room, it is recommended to keep the installation span not over 70 feet in the long direction, and 40 feet across the width direction of the floor. The spans are separated by approximately 16 mm separation which can be covered with 45 mm width T-Molding.

TOOLS AND SUPPLIES

Saw, tapping block, rubber mallet, spacers, pencil, tape measure, ruler and safety goggles.

INSTALLATION

Diagram 1

Start in a corner by placing the first plank with the tongue side facing the wall. Use spacers along each wall to maintain an expansion space of at least 3/8" or 10 mm between the wall and the flooring.

NOTE: This spacing must also be maintained between the floor and all vertical surfaces, including cabinets, posts, partitions, door-jamb and door tracks.



Diagram 2

To attach your second plank, lower and lock the end tongue of the second plank into the end groove of the first plank. Line up edges carefully to ensure a close and tight fit. Using a rubber mallet, lightly tap the top of the end joints where the first and second planks lock together.

The planks should lay flat to the floor.

WARNING: FAILURE TO PROPERLY LINE UP THE END JOINT AND ATTEMPTING TO FORCE IT IN WHILE OUT OF ALIGNMENT COULD RESULT IN PERMANENT DAMAGE TO THE END JOINT. Repeat this procedure for each subsequent plank in the first row. Continue connecting the first row until you reach the last full plank.

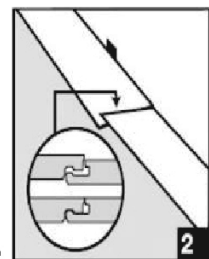


Diagram 3

Fit the last plank by rotating the plank 180° with the pattern side upward and placing it beside the first row of planks with its end up against the far wall. Line up a ruler across the end of the last full plank and across this new plank. Draw a line across the new plank with a pencil and cut with a saw. Rotate the plank 180° so that it is back to its original orientation. Lower and align the end tongue into the end groove of the last full plank. Lightly tap with rubber mallet to lock the end joints properly until the planks are flat on the floor.

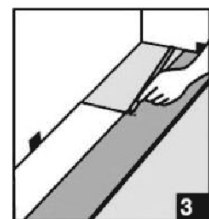


Diagram 4

To stagger the pattern, begin the next row with the left over cut piece from the previous row to stagger the pattern. If the left over cut piece is less than 1' long, cut a fresh plank approximately 2' long to achieve the staggered pattern. The shorter left over cut can be fitted into row that deemed fit for another staggered pattern.

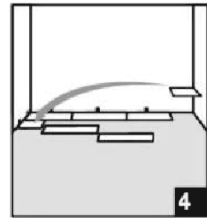


Diagram 5

VISION™ Waterproof Floor comes with angle lock along the sides and drop lock at both ends. Always leave 10 mm expansion gap between wall and laid floor. To lock the second row, tilt and push the new side tongue of new plank into the side groove of the first row. When lowered, the plank will slide and fit into place. Using a tapping block and rubber mallet, lightly tap the long side of the new plank to lock securely into the first row. The planks should lay flat to the floor.

To continue with the 2nd plank of the 2nd row, align the end joint right above the groove of the 1st laid plank, tilt and push the side to lock into the 1st row, precisely lower and latch the end joints together. Using a tapping block and rubber mallet, lightly tap the long side to lock the side joints into place. Next, using rubber mallet, lightly tap the end joints into place. When height difference is detected, check and make sure the drop lock is properly aligned and lock all the way. Continue laying remaining planks in this manner.

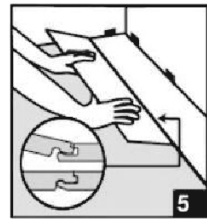


Diagram 6

To fit the last row properly, with its tongue to the wall, lay a plank on the top of the previous row. Use the edge of the bottom row as a reference to draw a straight line with a ruler. When trimming the width, don't forget to leave at least 10 mm expansion gap along the wall.



Diagram 7

Door frames and heating vents also require expansion gap. First cut the plank to the correct length. Then place the cut plank next to its actual position and use a ruler to measure the areas to be cut out and mark them. Cut out the marked points allowing the necessary expansion distance on each side.

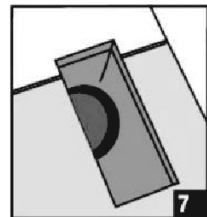


Diagram 8

To accurately trim the door frame, turn a floor plank upside down and place it right next to the bottom of the door frame or heating vent. Use the thickness of the floor as a reference to make precise cut with a handsaw. Slide the floor under the door frame.



CARE AND MAINTENANCE

VISION™ Waterproof Floor can withstand topical water and water penetration without damage. Water leakage over or around the outer edges of the flooring, however, can damage a wood subfloor, so clean up water as soon as possible. Water trapped underneath the flooring, while not causing damage to the flooring itself, could cause mold to grow or damage to subfloor. Any issues with a wet or damp concrete floor should be addressed before the installation of any flooring. Always maintain controlled environment temperature between 60 and 85°F.

Warning : Extended direct sun exposure can cause floor temperature to rise unnoticed, and causes excessive expansion. Example, in a room with 85°F ambient temperature, the section of floor exposed to prolonged sunlight at peak hours can cause floor temperature to reach 110°F. Constant exposure to direct sunlight can fade and discolor the floor. Installation of VISION™ Waterproof Floor is NOT recommended in sunroom with unrestrictive usage.

Glass ceiling, windows and doors must have quality UV protection, sunscreen, blinds, drapes or curtains.

Recommended maintenance and care procedures,

- Sweep regularly to remove surface grit and dust. Use a damp cloth or mop to clean up any dirt and footprints. CAUTION: floor may be slippery when wet.
- Never use wax, polish, abrasive cleaners or scouring agents as they may dull or distort the finish.
- Always clean and wipe off liquid spill, food, or urine immediately with damp mop. Avoid using strong chemicals like acetone, peroxide, strong bleaching solutions which may damage the scratch resistance coating of the floor.
- Avoid exposure to direct sunlight for extended periods of time. Use drapes or blinds to minimize direct sunlight during peak sunlight hours.
- Save a couple cartons of floor in case of accidental damage. Always seek professional advice for plank replacement.
- In the event of construction activities, always lay floor protector to prevent scratches or damage to the floor.
- High heels can damage floors.
- Dragging or rolling heavy object on wheels can damage floor surface. Use of 1/8" Masonite is recommended to protect the floor from indentations, wheel marks, or pivot point damage. Protective paper such as ram board or cardboard may not prevent these types of damage.
- Do not allow pets with unclipped nails to scratch or damage the floor.
- Use protective pads or coasters under furniture to prevent indentation.
- Use doormats at points of entrance to trap dirt and debris from shoes. Door mat can also prevent floor discoloration. Avoid using rubber-backed rugs, as they may stain or discolor the floor. If you have an asphalt driveway, use a heavy-duty doormat at your main door, as chemicals in asphalt can cause the flooring to turn yellow.
- Chairs with small wheels like office chair can cause heavy wear and tears over time due to concentration of motions and heavy loads on a small area of the floor. Always place protective mat under this type of activity.

LIMITED WARRANTY

The warranties described below are not transferable and given to original retail purchasers only, AND ARE SUBJECT TO THE PROCEDURES, LIMITATIONS, DISCLAIMERS AND EXCLUSIONS SET FORTH HEREIN. The warranty is for replacement of VISION™ Waterproof Floor and labor as described below. It does not cover costs incurred with loss of time, incidental expenses or any other damage. It does not cover damage from improper installation or maintenance (including side or end gapping), tears, indentations, reduction in gloss level due to normal use and/or exterior applications. Gapping, shrinkage, squeaks, fading, or subfloor related issues are not covered under this warranty. Floor temperature variations - above 115°F or below 0°F – may cause damages due to excessive expansion or contraction of the product.

Residential Installations: 25 years Limited Warranty

When installed and maintained according to the instructions supplied, VISION™ Waterproof Floor comes with 25-year Limited Residential Warranty from the date of purchase. The floor is guaranteed free of manufacturing defects. Under normal residential usage and when installed and maintained according to instructions supplied, the protective layer will not wear through to the decorative layer, or permanently stained from common household stains.

Within One Year : If a defect covered by this warranty is reported in writing within one year of purchase, we will supply new material of the same or similar quality to replace the defective material. Reasonable labor costs will also be covered. We will not pay to repair or replace material with defects that were apparent before or during installation.

Within Two Years : If a defect covered by this warranty is reported in writing after one year but within two years of purchase, we will supply new material of the same or similar quality to replace the defective material. Fifty percent of reasonable labor costs will also be covered. We will not pay to repair or replace material with defects that were apparent before or during installation.

After Two Years : If a defect covered by this warranty is reported in writing after two years but within twenty five years of purchase, we will supply new material of the same or similar quality to replace the defective material. We will not pay labor costs.

NOTE: reasonable labor costs shall be determined solely by the manufacturer and original purchase receipts must be presented with any claim.

Commercial Installations: 5 years Limited Warranty

When installed and maintained according to the instructions supplied, VISION™ Waterproof Floor comes with 5-year Limited Commercial Warranty from the date of purchase. The floor is guaranteed free of manufacturing defects. Under normal human traffic in commercial usage and when installed and maintained according to instructions supplied, the protective layer will not wear through to the decorative layer during the warranty time period.

Within One Year : If a defect covered by this warranty is reported in writing within one year of purchase, we will supply new material of the same or similar quality to replace the defective material. Reasonable labor costs will also be covered. We will not pay to repair or replace material with defects that were apparent before or during installation.

Within Two Years : If a defect covered by this warranty is reported in writing after one year but within two years of purchase, we will supply new material of the same or similar quality to replace the defective material. Fifty percent of reasonable labor costs will also be covered. We will not pay to repair or replace material with defects that were apparent before or during installation.

After Two Years : If a defect covered by this warranty is reported in writing after two years but within twenty five years of purchase, we will supply new material of the same or similar quality to replace the defective material. We will not pay labor costs.

Additional warranty stipulations for Residential and Commercial Warranties mentioned above:

- This warranty is limited to the original Owner / Purchaser.
- Manufacturer will be allowed sufficient time to physically inspect installed floor after written claim is received.
- The liability of manufacturer and sellers under this warranty shall be limited to the actual replacement of material and reasonable labor cost.
- Reasonable labor costs shall be determined solely by the manufacturer and original purchase receipts must be presented with any claim.
- Incidental or consequential costs associated with the repair or replacement of a damaged floor are not the responsibility of manufacturer or sellers.
- Claim for wear or other types of damage must show a minimum dime size area. The manufacturer and sellers reserve the rights to ONLY replace pieces of floor with claimed problem or issue. Replacement term in this Warranty does not constitute replacing the entire floor purchased, unless it is deemed fit by the manufacturer.
- To file claim, please contact authorized dealer where the floor was purchased.